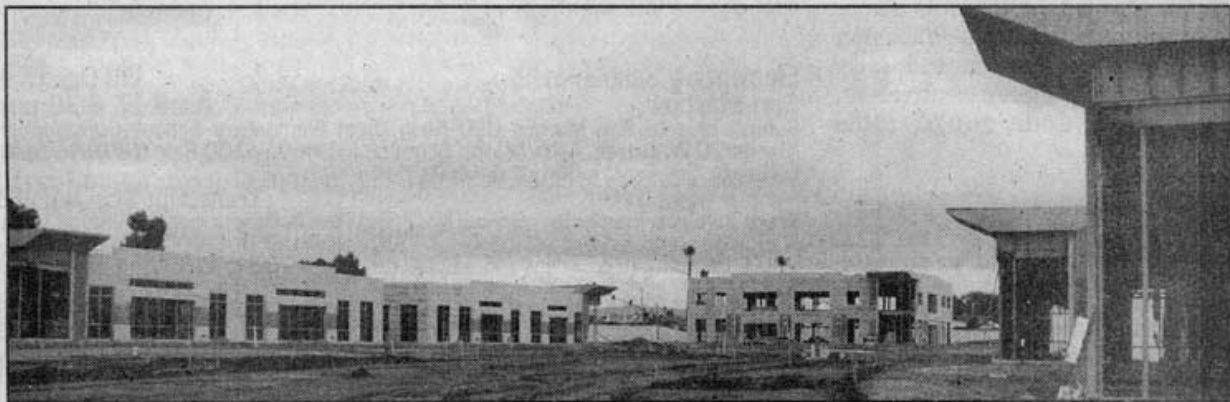


# Site work at The Spectrum @ Bressi Ranch



*The Daily Transcript*

SAN DIEGO — **TSA Contracting** has started the site work for The Spectrum @ Bressi Ranch, a 119,000-square-foot office/R&D project consisting of 14 concrete tilt-up buildings in Carlsbad. Also, the underground utilities are 80 percent complete on the \$33 million project.

With an expected completion of

first quarter 2007, the project is part of a 9.63-acre campus within Bressi Ranch Business Park at the southwest corner of Melrose Drive and Palomar Airport Road.

The owner is **Bressi Spectrum LLC**, with Jim Jacob as executive vice president overseeing the project. Another team member from **St. Croix Capital**, [www.StCroixCapitalCorp.com](http://www.StCroixCapitalCorp.com), is

Richard Landreth, senior vice president managing director of construction services.

**Smith Consulting Architects** is providing design and architectural services. Design features of the project include high tower elements at the entries, bronze reflective glass with champagne gold mullions, steel trellises and

See **Spectrum** on 2C

## Spectrum

*Continued From Page 1C*

stone veneer. The project also incorporates outdoor courtyards with trellis-covered patios. Gary Baker is vice president of design for Smith Consulting, with Gary Potter as senior project architect.

Lannie Allee, Roger Carlson and Lars Eisenhauer of **CB Richard Ellis** (NYSE: CBG) are handling the sale of the 12 single-story office buildings, ranging in size from 5,700 square feet to 8,200 square feet, and the pair of

two-story office buildings of 15,000 square feet each.

Subcontractors include **Prime Structural Engineers, Partners Planning and Engineering, MPE Consulting Inc., Ridge Landscape Architects** and **DEC Engineering Inc.** TSA representatives include Mike Shamshoian as superintendent, Randall LaRocco as senior project manager, Michele Kramer as project coordinator and Terry S. Arnett as project executive.

**Source Code: 20070413tda**